



Interreg



UNION EUROPÉENNE
UNIONE EUROPEA



MARITTIMO-IT FR-MARITIME

Fonds européen de développement régional
Fondo Europeo di Sviluppo Regionale

NEPTUNE blue paths

POINTE DE L'AIGUILLE SNORKELING PATH



Snorkeling



Natural



Accessible



**Highly
frequented**

Geographical location

France, Alpes-Maritimes, Théoule-sur-Mer

Name of conservation area (or protected area)

Parc maritime départemental Estérel-Théoule

Degree of environmental protection

Area reserved for swimming only (ZRUB) from June to September

Snorkeling pathway name

Snorkeling pathway of the *Pointe de l'Aiguille*

Geographical coordinates (reference system)

LAT **43°30'21"N**

LONG **06°57'02"E**

Reference system **WGS 84**



LOCATION



Type of access to the snorkeling pathway

Access on land by the *Promenade du Pradeyrol* which runs along the beaches from the center of Théoule-sur-Mer. Otherwise by boat outside the swimming area.

Site characteristics

Maximum depth **10 m**

Difficulty **Low**



Natural



Accessible: Site suitably equipped to facilitate access to people with disabilities

Information from the managing organisation

The snorkeling pathway is managed by the Department of the Alpes-Maritimes and the Théoule-sur-Mer municipality. Very popular in summer, easy access to land, presence of a first aid post from 1st July to 31st August as well as a beaconing.



INFORMATION



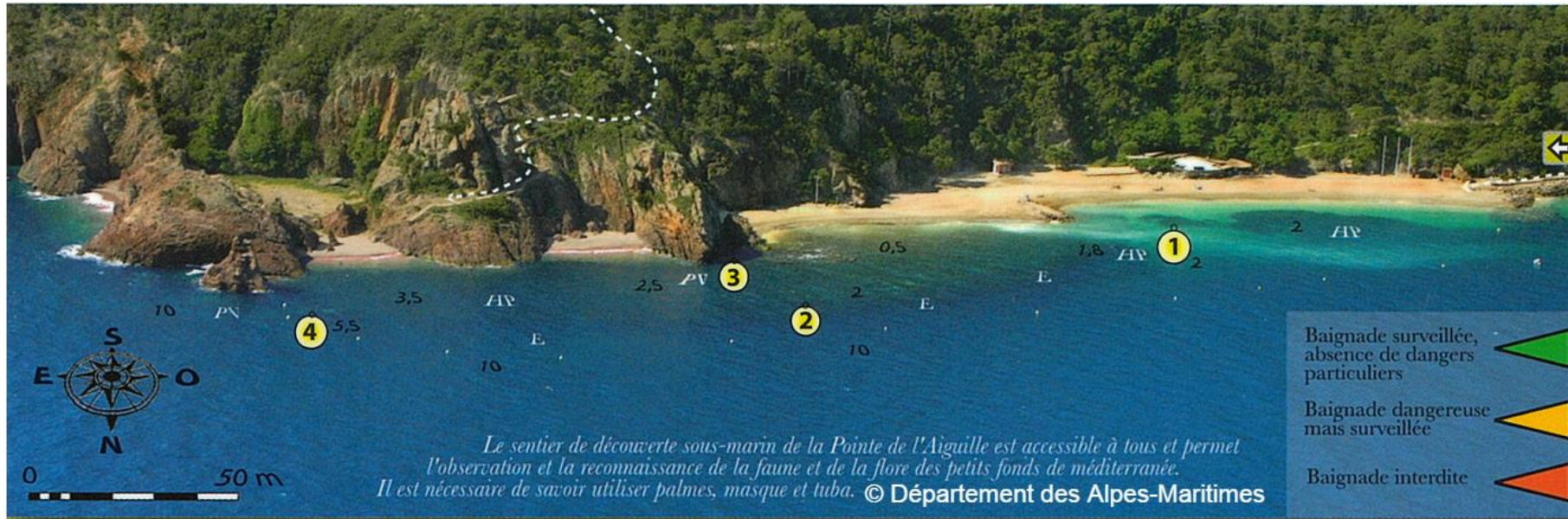
Permit not required



Snorkeling

PATH MAP

The snorkeling pathway is managed by the Department of the Alpes-Maritimes and the Théoule-sur-Mer municipality.



Buoy 1: Posidonia meadows and sandy zone, the posidonia meadows extend along rocky scree.

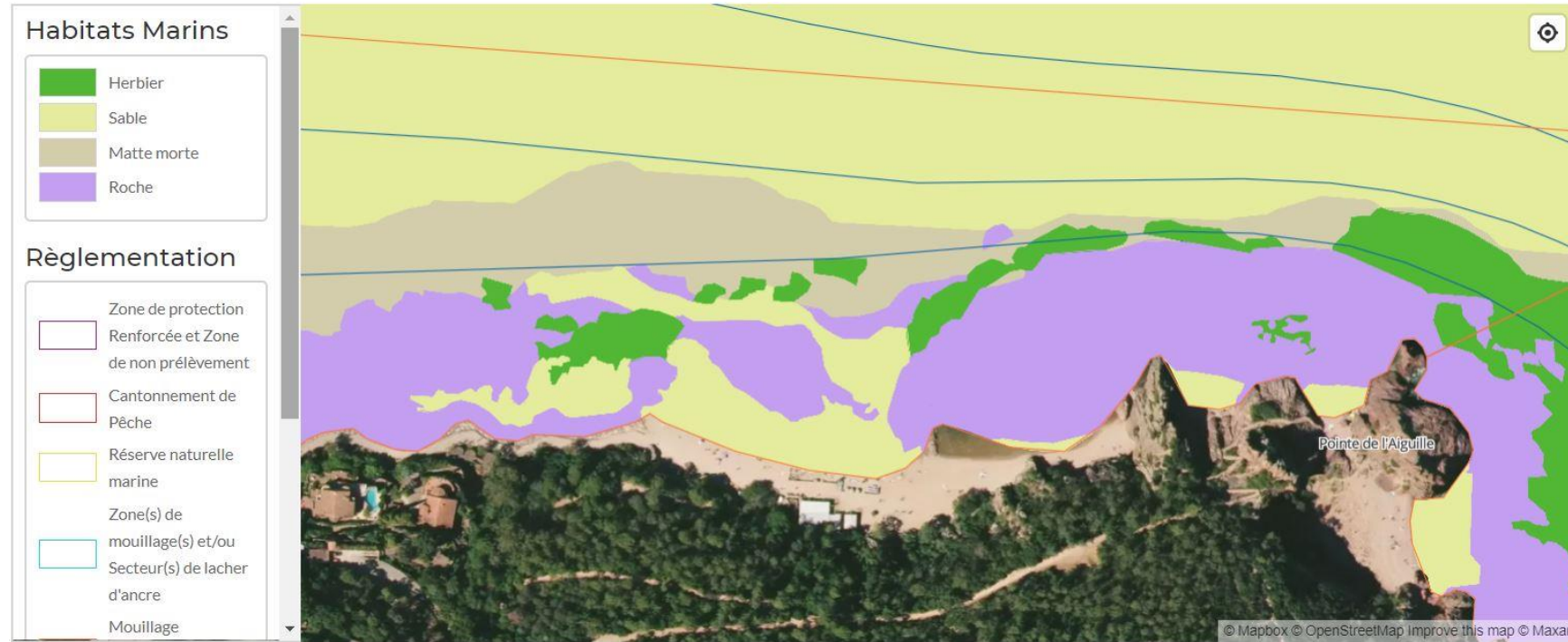
Buoy 2: Rocky scree that descends rapidly to about ten meters.

Buoy 3: Vertical wall that allows the observation of fixed species with a zone beaten by the waves.

Buoy 4: Remarkable rocky outcrop with orange-red encrusting sponge and yellow encrusting anemone

Description of the site of natural interest

The snorkeling pathway of the *Pointe de l'Aiguille* presents a mosaic of habitats conducive to an important biodiversity: small rock and pebble bottoms, sandbanks, Posidonia meadows, coralligenous rocks and open water.



Habitat map (GIS)

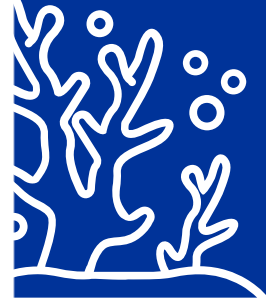


NATURAL

Area of main habitats (within a 100m radius of the site)

- posidonia meadows (*Posidonia oceanica*)
- sandy areas
- rochy areas





NATURAL

Peacock wrasse (*Parablennius pilicornis*) and turkish wrasse



Cormorant and basses fishing in a school of big-scale sand smelts



Red starfish (*Echinaster sepositus*)

Black sea cucumber during the breeding season



Main species list and environmental heritage photos

- white seabream (*Diplodus sargus*)
- sharpsnout seabream (*Diplodus puntazzo*)
- gilthead seabream (*Sparus aurata*)
- peacock wrasse (*Symphodus tinca*)
- mediterranean rainbow wrasse (*Coris julis*)
- turkish wrasse (*Thalassoma pavo*)
- salema (*Sarpa salpa*)
- funnel weed (*Padina pavonica*)
- big-scale sand smelt (*Atherina boyeri*)
- black sea-urchin (*Arbacia lixula*)



ACCESSIBLE

Théoule parking



Aiguille's beach



Promenade du Pradeyrol



Local of the *Parc naturel départemental of the Pointe de l'Aiguille* and first aid post on the left

Tourism and Handicap Label
"in progress"

Access by the Promenade du Pradeyrol, accessible for people with reduced mobility in wheelchairs.

Parking proposed in Théoule at the entrance of the Promenade.

Contact the *Parc naturel départemental of the Pointe de l'Aiguille*:

<https://www.departement06.fr/parcs-naturels-departementaux/accessibilite-des-parcs-aux-personnes-en-situation-de-handicap-2519.html>