



Interreg



UNION EUROPEENNE
UNIONE EUROPEA



MARITTIMO-IT FR-MARITIME

Fonds européen de développement régional
Fondo Europeo di Sviluppo Regionale

NEPTUNE blue paths

RUBE POINT - ESPALMADOR



**Attention
FRAGILE**



Snorkeling



Natural



**Medium
frequented**

Geographical location

France, Alpes-Maritimes, Villefranche-sur-Mer/Saint-Jean-Cap-Ferrat

Snorkeling pathway name

Rube Point - Espalmador Bay

Geographical coordinates (reference system)

LAT **43°51'57"N**

LONG **07°19'15"E**

Reference system **WGS 84**

LOCATION



Type of access to the snorkeling pathway

By the Plage des Marinières in Villefranche-sur-Mer or by boat

Site characteristics

Maximum depth

7 m

Difficulty

Medium, in case of swell in shallow waters



Natural

Information from the managing organisation

This site is moderately frequented. As the seabed is not deep, you must be careful not to hit the seabed with your flippers and remain horizontal during your visit to the underwater trail so as not to damage the shallow seabed.



INFORMATION



Permit not required



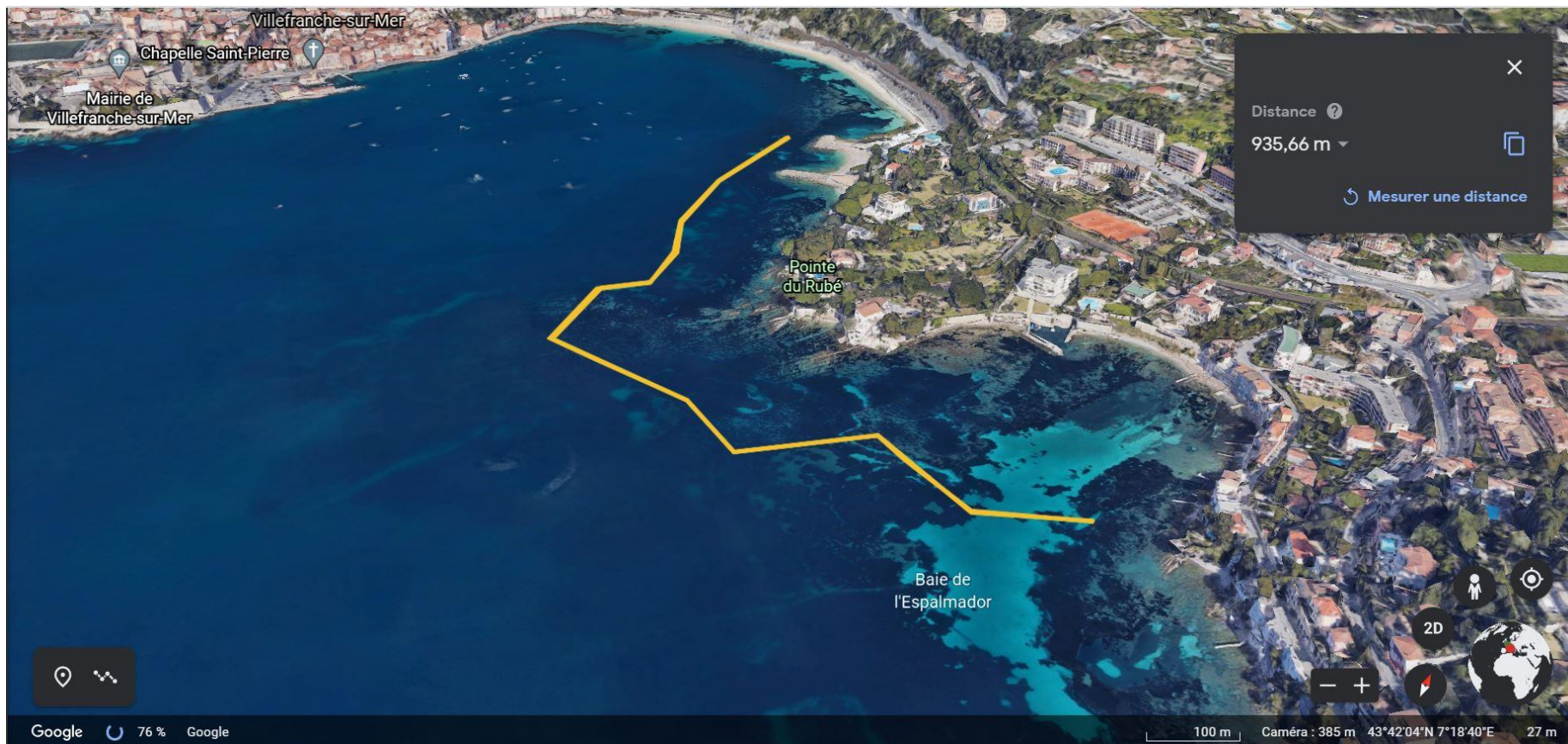
Snorkeling



Attention FRAGILE



PATH MAP



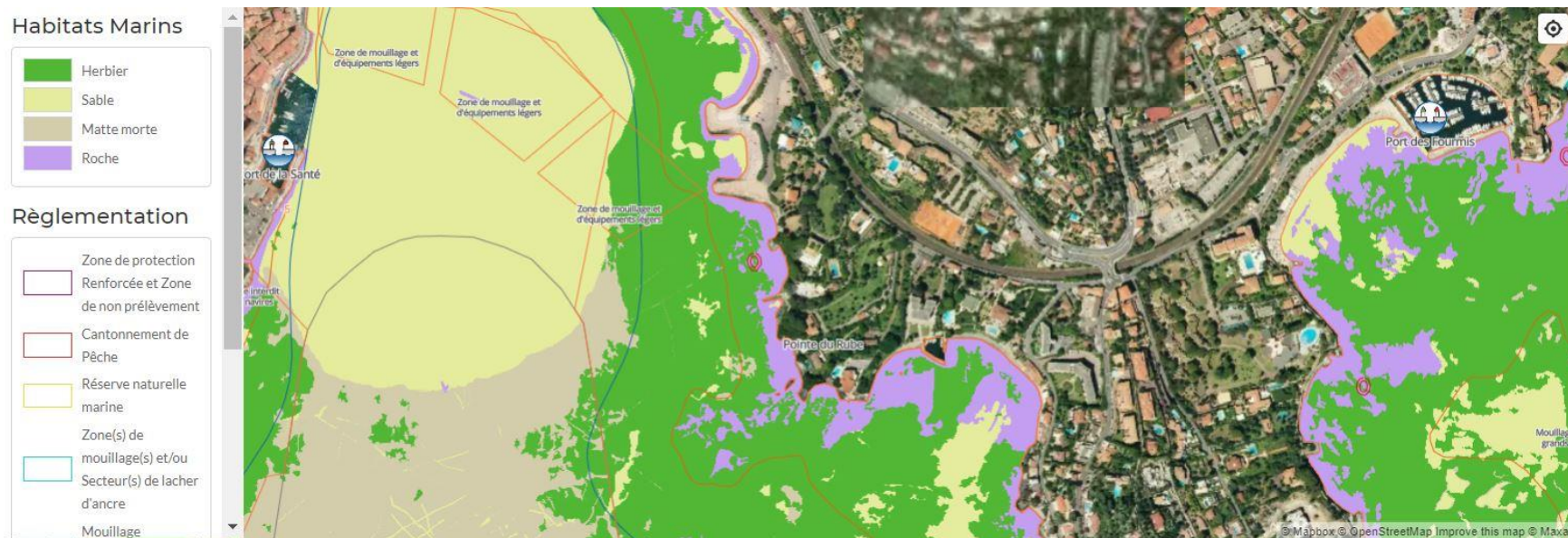
Description of the site of natural interest

The Rube Point area consists of shoals covered with 1.6 metres of water that extend north to the Bay of Espalmador. There are faults, boulders in the first few metres followed by posidonia meadows.



NATURAL

Area of main habitats (within a 100m radius of the site)



- posidonia meadows (*Posidonia oceanica*)
- sandy areas
- rochy areas

Habitat map (GIS)



NATURAL

Girelle paon



Red starfish (*Echinaster sepositus*)



Damselfishes on posidonia



Peacock wrasse (*Parablennius pilicornis*)

Main species list and environmental heritage photos

- opelet anemone (*Anemonia viridis*)
- white seabream (*Diplodus sargus*)
- turkish wrasse (*Thalassoma pavo*)
- damselfish (*Chromis chromis*)
- funnel weed (*Padina pavonica*)
- painted comber (*Serranus scriba*)
- red starfish (*Echinaster sepositus*)
- black sea-urchin (*Arbacia lixula*)