



**Interreg**



UNION EUROPEENNE  
UNIONE EUROPEA



MARITTIMO-IT FR-MARITIME

Fonds européen de développement régional  
Fondo Europeo di Sviluppo Regionale

**NEPTUNE blue paths**

# SCALINO SHOAL



**Attention  
FRAGILE**



**SPAMI  
species**



**Diving**



**Natural**



**Lowly  
frequented**

## Geographical location

Italy, Liguria, Savona, Municipality of Savona (SV)

## Name of conservation area (or protected area)

The shoal does not fall within protected areas or in SAC areas

## Degree of environmental protection

The area has no degree of protection

## Diving site name

Scalino shoal

## Geographical coordinates (reference system)

LAT **44° 17.882' N**

LONG **8° 29.265' E**

Reference system **WGS84**



LOCATION



## Type of access to the diving site

**By boat**

## Site characteristics

Maximum depth

**from -16m to -24m**, suitable for advanced sport diving

Difficulty

**Low**



**Natural**

## Information from the managing organisation

The dive, defined as simple given the low current and good visibility, is suitable for advanced patent holders but also open water. In general around 200 dives can be estimated each year with three dive centers operating on the site.



**INFORMATION**



**Diving**



**Permit not required**



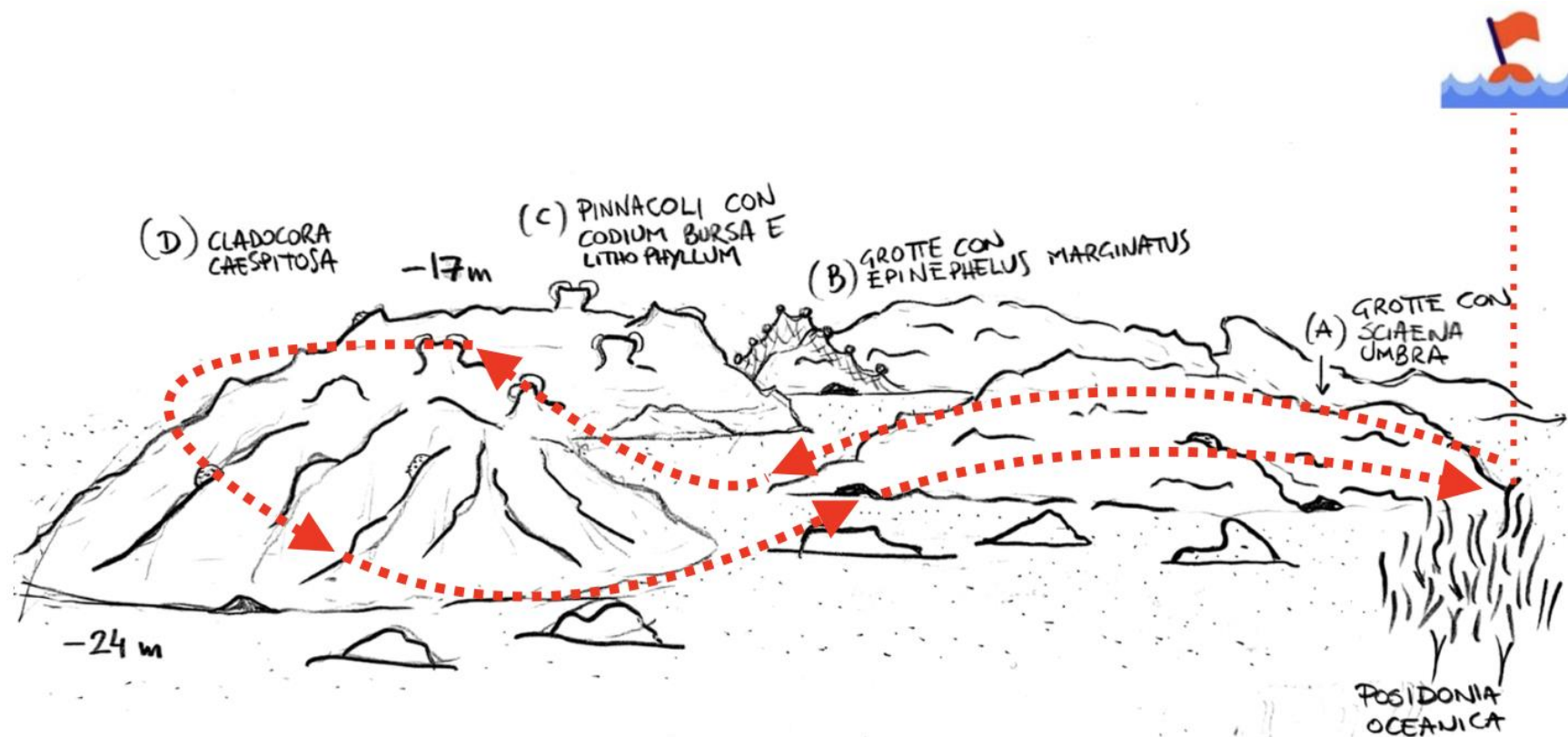
**Interreg**



MARITTIMO-IT FR-MARITIME

Fonds européen de développement régional  
Fondo Europeo di Sviluppo Regionale

# PATH MAP



Attention FRAGILE



SPAMI species

## Description of the site of natural interest

More than a shoal, that of the «calino» is a rocky ridge, about 6 m high with an elongated shape, of about 120-150m, arranged parallel to the coast. With a length of 200m and an average width of about 30m, the shoal is about 600m from the coast and is located overlooking the Priamar fortress, not far from the port of Savona, at a depth between 16m and 24m, therefore suitable for advanced sports diving.

The shoal is characterized, towards the coast, by a sandy bottom that develops up to 20 meters deep and which has patches of *Posidonia oceanica* and some rock formations. Around 16m begins the ciliate which reaches up to 24m. In general, the site is characterized by benthic communities typical of infralittoral rocky bottoms with a dominance of infralittoral sciaphilous algae (*Codium bursa*, *Halimeda tuna*, *Flabelia petiolata* and *Padinia pavonia*) while the walls, with a not very pronounced slope, have cavities, ravines and cracks that they favor the development of porifera. Coralline algae, such as *Lithophyllum strictaeformae* and *Peyssonnelia* spp. they are well represented throughout the development of the shoal. In the western part, towards the land, there is a small area with *Posidonia oceanica*. There is no shortage of fish species typical of burrows such as *Apogon imberbis*, *Muraena helena*, *Conger conger*, *Scorpaena* spp. and the protected species *Epinephelus marginatus* and *Sciaena umbra*.

The fish fauna of the shoal attracts both professional and amateur fishermen; the abundant presence of abandoned fishing gear (lines and nets) testifies to this.



## NATURAL

### Main species list

- *Posidonia oceanica*
- *Lithophyllum strictaeformae*
- *Cladocora caespitosa*
- *Centrostephanus longispinus*
- *Paracentrotus lividus*
- *Sciaena umbra*
- *Epinephelus marginatus*



# NATURAL



Habitat map (GIS)

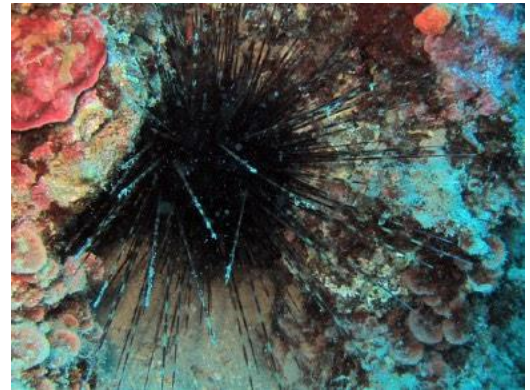
Area of main habitats (within a 100m radius of the site)

- Area of the main habitats: 284,000 m<sup>2</sup>
- Coralligenous (or precoralligenous) habitat: 4,000 m<sup>2</sup> plus two more rocky shoals for another 11,000 m<sup>2</sup>
- *Posidonia oceanica*: grassland close to the shoal 280,000 m<sup>2</sup>



Environmental heritage photos

*Centrostephanus longispinus*



*Octopus vulgaris*

*Parazoanthus axinellae*



*Peltodoris astromaculata* e  
*Petrosia ficiformis*