



Interreg



UNION EUROPEENNE
UNIONE EUROPEA



MARITTIMO-IT FR-MARITIME

Fonds européen de développement régional
Fondo Europeo di Sviluppo Regionale

NEPTUNE blue paths

BIANCHI E NERI SHOAL



**Attention
FRAGILE**



**SPAMI
species**



Diving



**Cultural and
natural**



**Highly
frequented**

Geographical location

Italy, Liguria, Savona, Municipality of Varazze

Name of conservation area (or protected area)

The shoal is located beyond the southern limit of the Fondali di Arenzano - Punta Invrea SIC (IT1332477), a few meters beyond the lower limit of the *Posidonia oceanica* prairie of Cogoleto-Varazze.

Degree of environmental protection

The area does not have any degree of protection

Diving site name

Shoal of Bianche e Neri

Geographical coordinates (reference system)

LAT	44°22'28" N
LONG	08°38'01" E
Reference system	WGS 84/UTM 32N

LOCATION



Type of access to the diving site

By boat

Site characteristics

Maximum depth **maximum -24m**

Difficulty **High**



Cultural and natural

Information from the managing organisation

There are not many dives that operate on the shoal because the difficulty of diving is high given the often poor visibility, the type of square dive and the presence of some abandoned nets (ghost nets).



INFORMATION

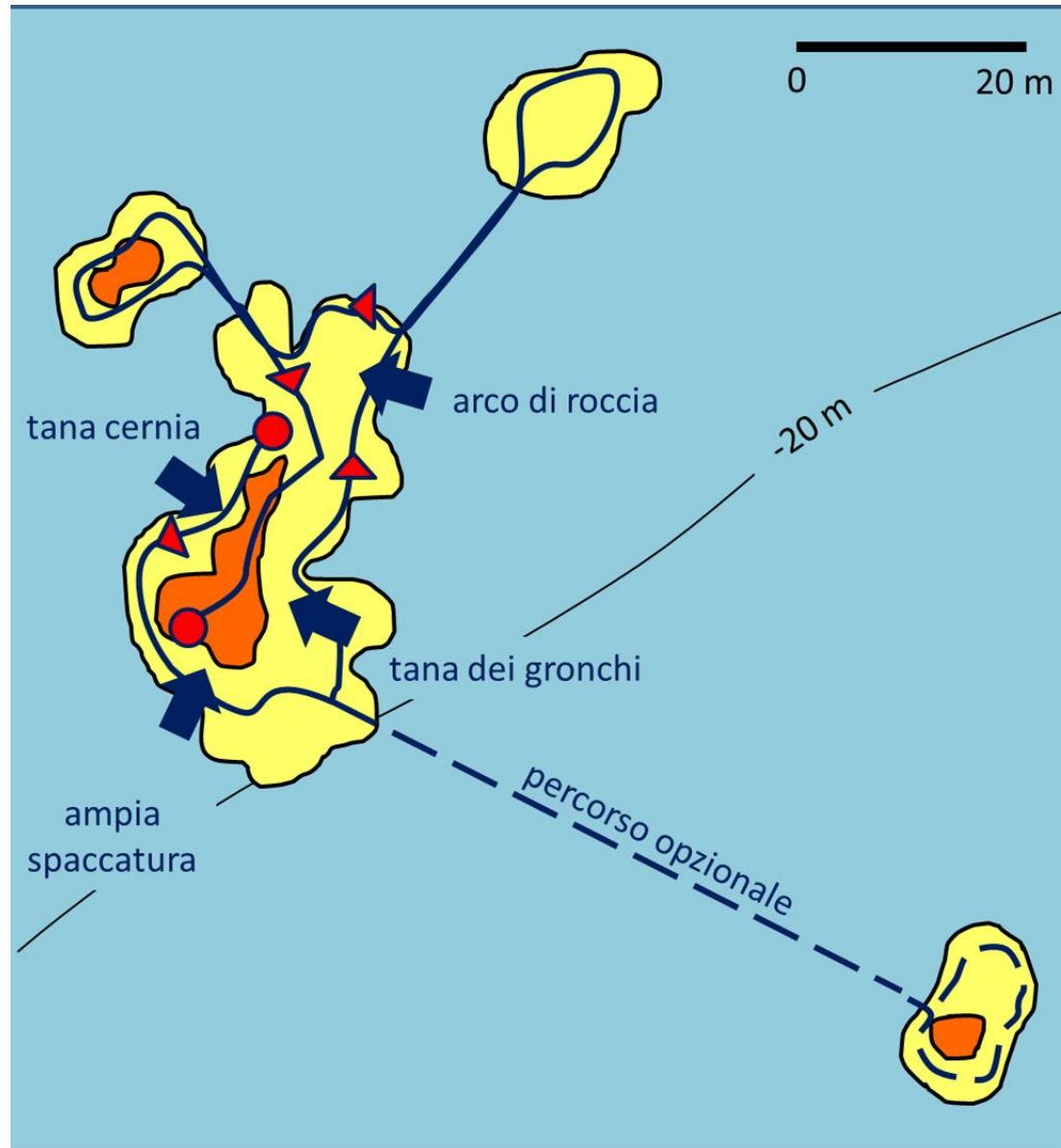


Diving



Permit not required

PATH MAP



Attention **FRAGILE**



SPAMI species

Description of the site of natural interest

The shoal is oriented along a NNE - SSW directive for a length of about 40m, on the seabed in front of Punta Invrea, in the municipality of Varazze (SV), at a maximum depth of -21 meters, with a difference in height of about 4-5 meters. In the southernmost part of the shoal, the rock has a deep crack that hosts various sedentary fish species such as brown groupers, crabs, moray eels and scorpionfish as well as numerous octopuses.

By swimming in the E-SE direction for about 50 meters, you reach a rocky outcrop at a bathymetric depth of about 24m, where it is possible to observe populations of the infralittoral coralligenous with dens of octopuses and other sedentary organisms. Along the east and west facing walls there are sponges and hydrozoans on which there are often specimens of nudibranchs of different species. In the numerous crevices of the rock it is possible to observe crustaceans of various species and some echinoderms such as sea stars, sea urchins, ophiures and holothurians.

At the northern limit of the shoal there is a rocky arch that emerges from the bottom for about one meter, colonized by numerous encrusting organisms, such as sponges and bryozoans. At the edge of the shoal there are some specimens of erect sponge and, on the detrital substrate that surrounds the rocks, it is possible to observe benthic species typical of the mobile substrates of the area such as ceriantes.

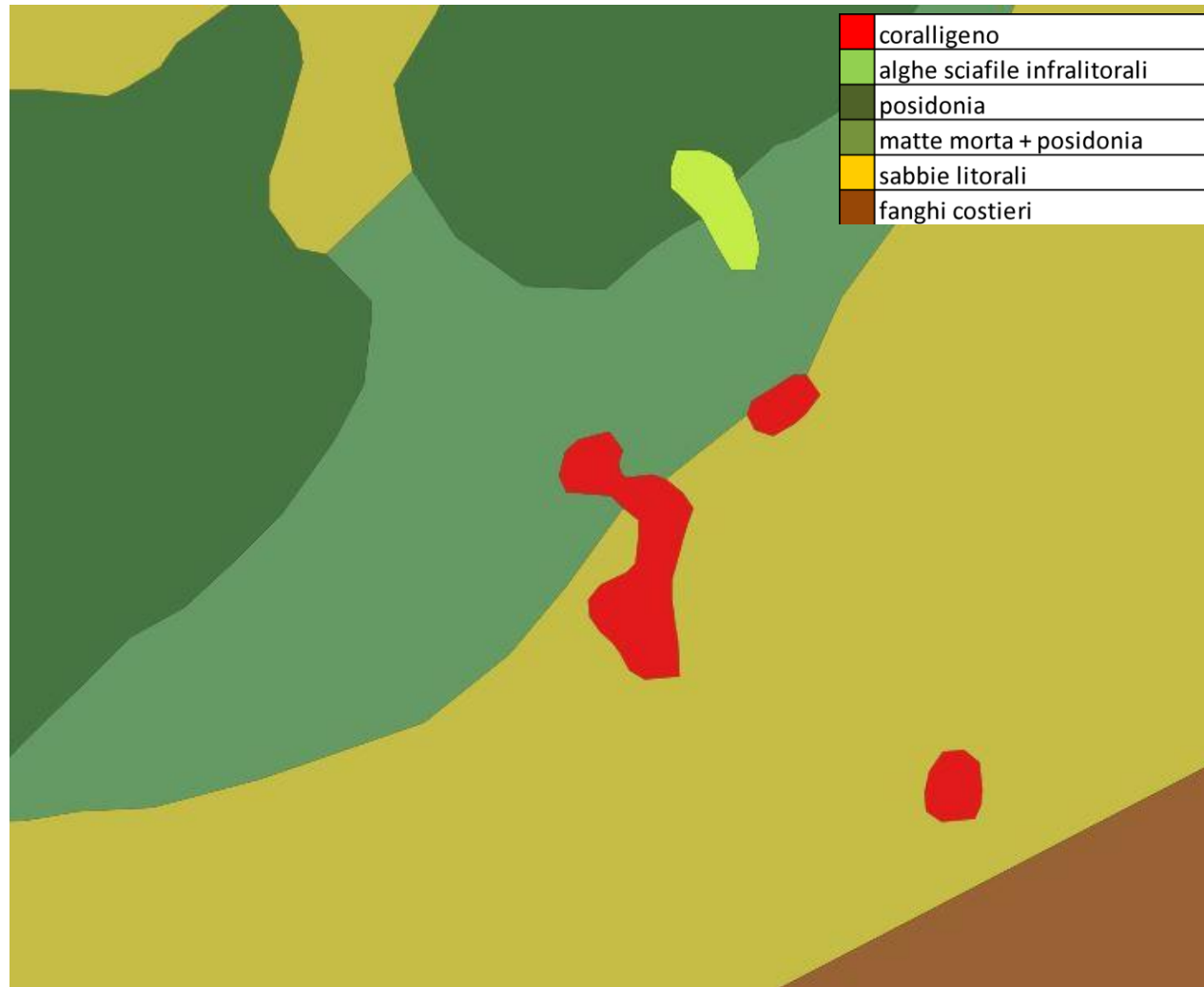
Occasionally you can come across specimens of passing pelagic fish, such as the sunfish. At a distance of about 200 meters to the south, there is a large complex of rocks, called dry San Giacomo, which occupies an area of about 15,000 m² with numerous rocky outcrops surrounded by stretches of detrital substrate. This area is populated by populations of very varied structuring species



NATURAL

Main species list

- *Lithophyllum strictaeformae*
- *Axinella polypoides*
- *Cladocora caespitosa*
- *Octopus vulgaris*
- *Stenopus spinosus*
- *Echinaster sepositus*
- *Paracentrotus lividus*
- *Epinephelus marginatus*
- *Mola mola*



Habitat map (GIS)



NATURAL

Area of main habitats (within a 100m radius of the site)

- Area of the main habitats: 284,000 m²

- Coralligenous habitat - Coralligene habitat: 870 m²

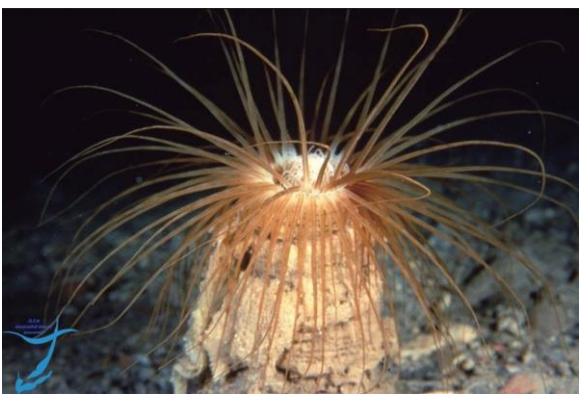
Posidonia oceanica - *Posidonia oceanica*: 49.700 m² *

* grassland close to the shoal

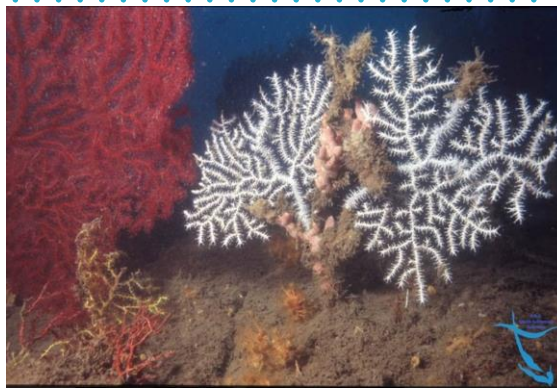


Environmental heritage photos

Cerianthus membranaceus



Sabella pavonina



Eunicella verrucosa

Habita a coralligeno

