



Interreg



UNION EUROPEENNE
UNIONE EUROPEA



MARITTIMO-IT FR-MARITIME

Fonds européen de développement régional
Fondo Europeo di Sviluppo Regionale

NEPTUNE blue routes

BLUE SNORKELLING TRAIL RIOMAGGIORE



**Attention
FRAGILE**



**ASPIM
Species**



Diving



Natural



Accessible



**Averagely
attended**

Geographical localisation

Italia, Liguria, Riomaggiore, La Spezia

Name of the conservation area (or protected area)

Cinque Terre Marine Protected Area

Degree of environmental protection

Zone B

Dive site name

Lama Crexia

Geographical coordinates (reference system)

LAT	44°05.770'N
LONG	009°44.250'E
Datum/reference system	WGS84

LOCALISATION



Type of access to the dive site
by land and by boat

Site features

Maximum depth **15 m**
Difficulty **Low**



Natural



**Site equipped
to enable the visually impaired to get to know the underwater world**

Information from the managing body

Estimated number of dives carried out on the site per year

N.A.



INFORMATION



Diving



ROUTE MAP



Attention **FRAGILE**



ASPIM species

Description of site of natural interest

The Riomaggiore swimming lane runs south towards the Capo Montenero promontory, one of the two A zones of the Marine Protected Area, which greatly influences the beauty of the route itself.

Wearing a mask and snorkel, looking in any direction, you can spot seabream (*Diplodus* sp.), Mediterranean chromis (*Chromis chromis*) and salemas (*Sarpa salpa*), in large quantities and not at all shy. Snorkelers will also be able to spot other fish closer to the rocky, algae-covered seabed, such as painted comber (*Serranus scriba*), Mediterranean rainbow wrasse (*Coris julis*) and comber, which, being very territorial and curious, will often stay put and allow themselves to be observed for a long time.

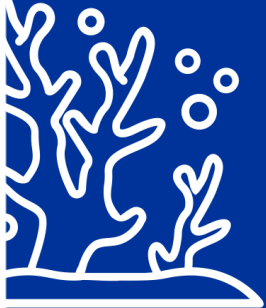
In the shadier corners, you may also spot brown meagre (*Sciaena umbra*) and king mullets (*Apogon imberbis*). Invertebrates such as starfish (*Echinaster sepositus*), orange sponges (*Spirastrella cunctatrix*), gorgonians, octopuses and, for the more discerning eye, small, delicately coloured nudibranches (*Dondice banyulensis*) can also be seen. The predominantly rocky seabed, full of crevices, offers protection and shelter to all these organisms, which live here in complete harmony with their habitat and human presence. In addition, the headland in front of it shelters the swimming lane area from the Sirocco, one of the main winds for this stretch of coast.



NATURAL

Main species list

- *Coris julis*
- *Sciaena umbra*
- *Apogon imberbis*
- *Echinaster sepositus*
- *Dondice banyulensis*
- *Spirastrella cunctatrix*
- *Diplodus* sp.



Environmental heritage photos

Apogon imberbis



Echinaster sepositus

Coris julis

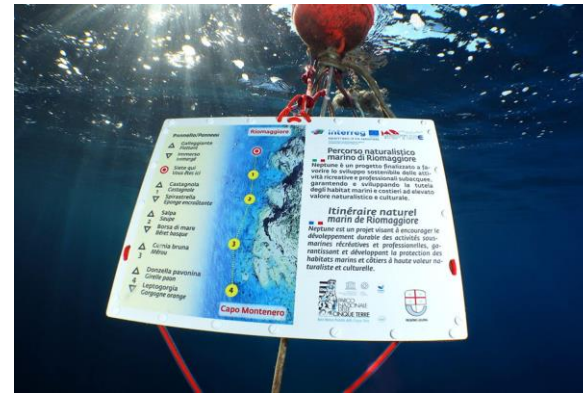


Sciaena umbra

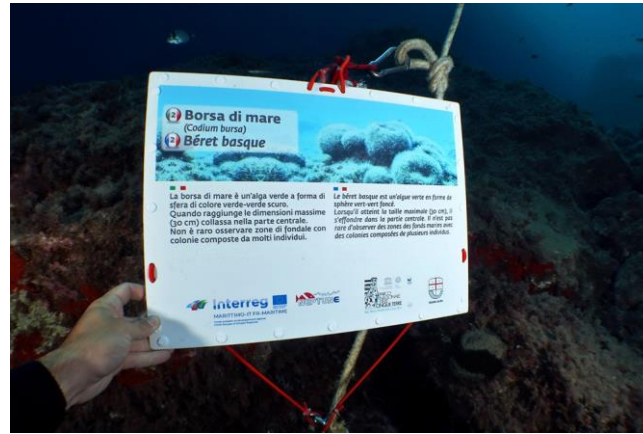


ACCESSIBLE

Panel describing the entire route



Panel describing the seaweed *Codium bursa*



Descriptive panel of the red sea star (*Echinaster sepositus*)



Sub reading the panel

The Riomaggiore swimming lane starts a few metres from the beach of the municipality of the same name and winds its way south towards the Capo Montenero promontory. The swimming lane takes place entirely in zone B of the Protected Marine Area, an intermediate protection zone, in a rocky environment where the maximum depth of the seabed is 12 metres. Thanks to the presence of special braille panels positioned on the bottom, it will be possible for the visually impaired to enjoy the wonders offered by this splendid blue route.