



**Interreg**



UNION EUROPEENNE  
UNIONE EUROPEA



MARITTIMO-IT FR-MARITIME

Fonds européen de développement régional  
Fondo Europeo di Sviluppo Regionale

**NEPTUNE blue paths**

# SECCA DEL MONACO



**Attention  
FRAGILE**



**SPAMI  
species**



**Diving**



**Permit not  
required**



**Natural**



**Medium  
frequented**

## Geographical location

Italy, Liguria, Imperia, Municipality of Ventimiglia

## Name of conservation area (or protected area)

The Secca del Monaco dive site falls within the Capo Mortola Marine Protection Area.

## Degree of environmental protection

The Capo Mortola Marine Protected Area is an integral part of the Regional Protected Area "Giardini Botanici Hanbury", whose management is entrusted to the University of Genoa. The Capo Mortola ATM is a member of the Liguria Marine Protected Areas network and is the subject of two monitoring activities that took place in 2010 and are partly continuing. One is dedicated to monitoring the impact of recreational boating and in particular the anchoring of boats of different sizes. The other is aimed at assessing the effect of the reserve on fish fauna; it has highlighted the importance of the shoals and the seabed as a whole for marine biodiversity.

## Diving site name

**Secca del Monaco**

## Geographical coordinates (reference system)

LAT **43°45'676"**

LONG **7°32'494"**



LOCATION



## Type of access to the diving site

**By boat**

## Site characteristics

Maximum depth

**From -12 to -39 m.** Between 12 and 18 m in depth, the 'Scafe del Monaco' rise, while the main wall starts at 18 m and sinks to almost 40 m in depth.

Difficulty

**Low/Medium/high**



**Natural**

## Information from the managing organisation

Currently, the best way to visit the Capo Mortola Marine Conservation Area is to contact the Pianeta Blu company and arrange an activity at sea.



**INFORMATION**



**Diving**



**Permit not required**

## Description of the site of natural interest

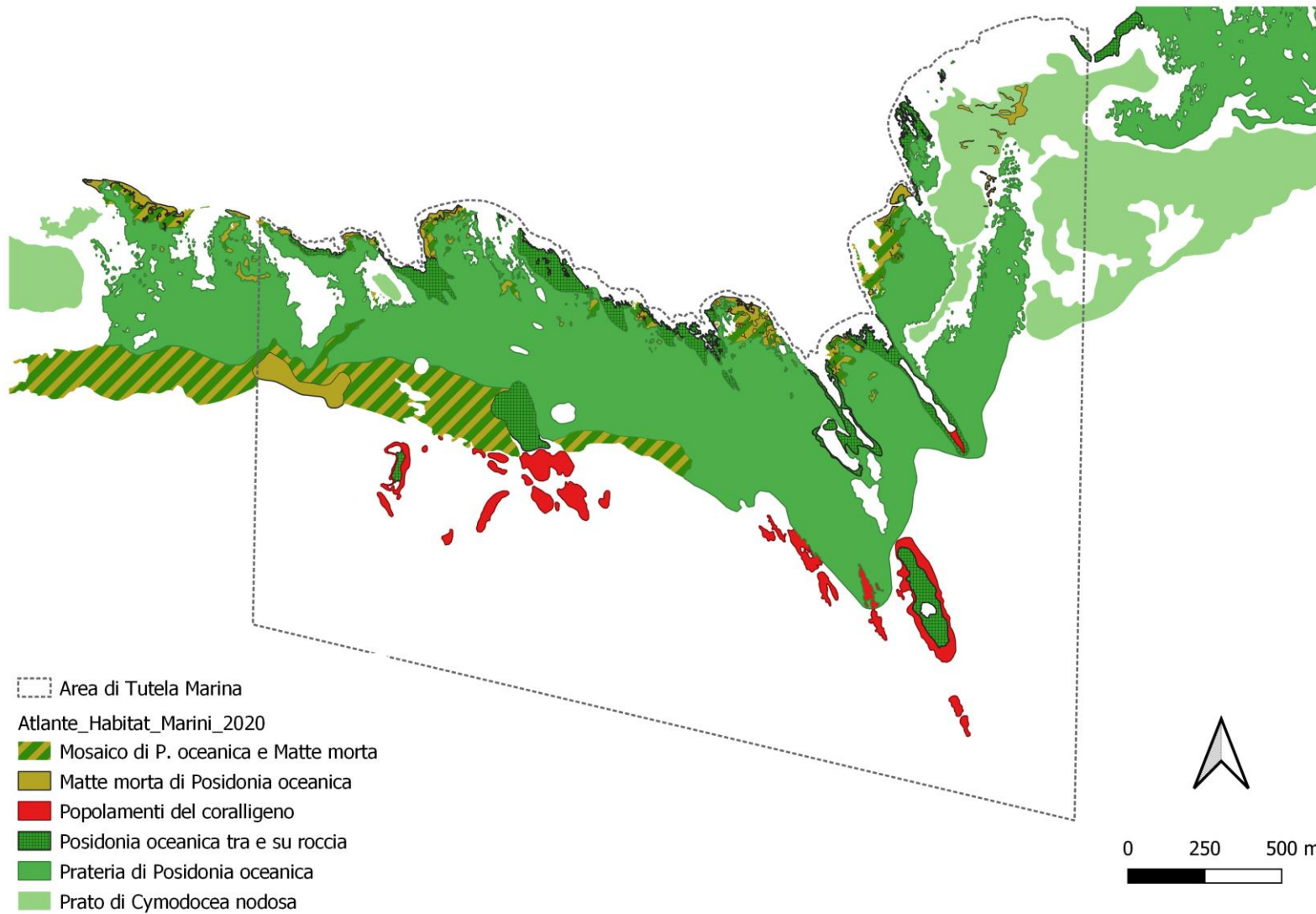
The Secca del Monaco is the largest shoal at Capo Mortola, at 200 m in length. In the centre of it, between 18 m and 12 m deep, are the 'Scafe del Monaco', rocky stacks on top of which *Posidonia oceanica* grows. The main wall starts at 18 m and sinks to a depth of almost 40 m, where you can observe a population of red gorgonians (*Paramuricea clavata*), on whose branches you can easily spot the gorgonian star (*Astrospartus mediterraneus*). Thanks to its geographical position, this shoal is sometimes swept by strong currents and is frequented by passing fish such as amberjacks (*Seriola dumerili*) and liches (*Lichia amia*). On the seabed you can see, among other things, groupers, lobsters, scorpion fish, moray eels, monsters, nudibranches and barracudas.



NATURAL

### Main species list

- *Muraena helena*
- *Octopus vulgaris*
- *Scorpaena spp.*
- *Diplodus spp.*
- *Phycis phycis*
- *Epinephelus marginatus*
- *Palinurus elephas*
- *Paramuricea clavata*



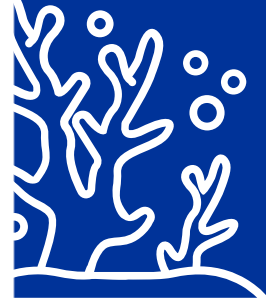
Habitat map (GIS)



## NATURAL

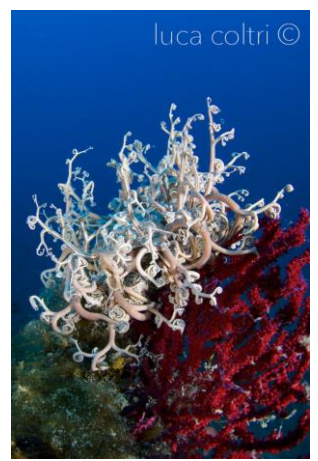
Main habitats (within a 100m radius of the site)

- *Posidonia oceanica* mosaic and dead matte
- *Posidonia oceanica* dead matte
- Coralligenous populations
- *Posidonia oceanica* between and on rocks
- *Posidonia oceanica* meadow
- *Cymodocea nodosa* meadow



Environmental heritage photos

*Octopus Vulgaris*



*Astrospartus mediterraneus*



*Dasyatis sp.*



*Phycis phicis*